

USAGE

THE XP SERIES IS DESIGNED FOR MOUNTING IN A HAZARDOUS LOCATION THAT IS REMOTE FROM ITS 6-VOLT OR 12-VOLT POWER SOURCE.

LOCATION

IF THE POWER SOURCE MUST BE LOCATED WITHIN THE HAZARDOUS AREA, USE THE "SEXP SERIES" POWER UNITS IN THE "SPECIAL-USE PRODUCTS" SECTION OF THIS CATALOG. IF THE POWER SOURCE CAN BE MOUNTED IN A NON-HAZARDOUS AREA, USE ANY STANDARD EMERGENCY LIGHT IN THE "INDUSTRIAL PRODUCTS" SECTION OF THIS CATALOG. THE TOTAL REMOTE LOAD MUST BE AT THE SAME VOLTAGE AS THE POWER SOURCE AND MUST NOT EXCEED THE 1.5-HOUR CAPACITY RATING OF THE POWER SOURCE.

IMPORTANT

THE PROPER WIRE SIZE MUST BE USED TO CONNECT THE REMOTE LOAD TO THE POWER SOURCE. SEE THE "WIRING DISTANCE REFERENCE" CHART IN THE "TECHNICAL INFORMATION" SECTION OF THIS CATALOG. FOR LONGER WIRE RUNS (DISTANCE FROM THE POWER UNIT TO THE REMOTE FIXTURE), USE 12-VOLT EQUIPMENT.

SERIES FEATURES



- ▶ FOR USE IN:
 - CLASS I, DIVISION I & II, GROUPS C & D
 - CLASS I, DIVISION I & II, D PAINT SPRAY
 - CLASS II, DIVISION I & II, GROUPS E, F, & G
 - CLASS III
- ▶ 6- OR 12-VOLT OPERATION
- ▶ HALOGEN 10-WATT OR 20-WATT LAMPS
- ▶ HEAVY CAST ALUMINUM CONSTRUCTION
- ▶ GREY EPOXY POWDER-COAT FINISH
- ▶ HEAT- AND IMPACT-RESISTANT PRISMATIC GLASS GLOBE
- ▶ DIE CAST GUARD
- ▶ CEILING- AND WALL-MOUNT FIXTURES HAVE UNIVERSAL JUNCTION BOX WITH (4) TAPPED HOLES FOR 1/2" RIGID CONDUIT AND (3) CLOSE-UP PLUGS (3/4" AVAILABLE)
- ▶ PENDANT-MOUNT FIXTURE HAS 1/2" TOP HUB (3/4" AVAILABLE)



WALL MOUNT (-W)



CEILING MOUNT (-C)



PENDANT MOUNT (-P)

ORDERING INFORMATION

XP SERIES	6 LAMP VOLTAGE 6 12	-W MOUNTING TYPE WALL PENDANT CEILING	-H20 HALOGEN LAMP WATTAGE H10 - 10 WATTS H20 - 20 WATTS
---------------------	-------------------------------------	--	--

ACCESSORIES
(ORDER SEPARATELY)

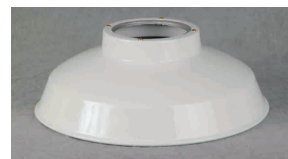
- EX-DR** STRAIGHT DOME REFLECTOR
- EX-AR** 30° ANGLE REFLECTOR
- EX-XP1R** SINGLE-FACE EXIT KIT ATTACHED TO THE SEXP FIXTURE. HOUSING IS 18-GAUGE STEEL WITH A GREY POWDER-COAT FINISH. RED LETTERS. ARROWS INCLUDED. (DOUBLE FACE AND GREEN LETTERS AVAILABLE)
- EX-XP3R** THREE-FACE EXIT KIT. WHITE ACRYLIC TRIANGLE ATTACHED TO THE SEXP FIXTURE. RED LETTERS. ARROWS INCLUDED.
- EX-SEA.50** SWIVEL ELBOW ARM FOR 1/2" CONDUIT
- EX-SEA.75** SWIVEL ELBOW ARM FOR 3/4" CONDUIT



EX-XP3R



EX-XP1R



EX-DR



EX-AR



PHONE 815-459-7142 • FAX 815-459-6126

THE POWER TO PROTECT